

Butterflies of the Bernard Field Station

Robert J. Bernard Biological Field Station, Claremont, CA

1

Produced by: Nancy Hamlett

Photos by: Nancy Hamlett, Jonathan Wright, Tad Beckman, and Hartmut Wisch unless otherwise noted

© 2015 Bernard Field Station, Claremont, CA 91711 USA

© 2015 The Field Museum, Chicago, IL 60605 USA

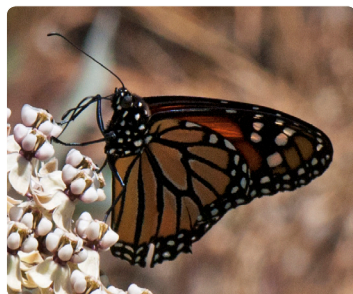
<http://www.bfs.claremont.edu>

<http://fieldguides.fieldmuseum.org>

version 01

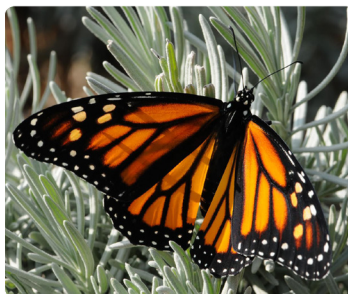
02/2015

Monarch: Bright orange (male) or orange-brown (female) with black veins and black borders with white spots. Host plants: milkweeds.



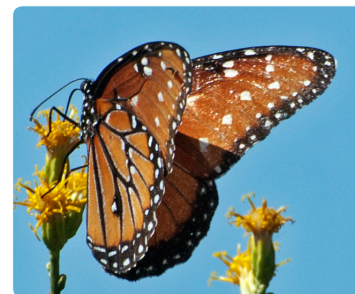
1

Monarch
Danaus plexippus



2

Monarch
Danaus plexippus



3

Queen
Danaus gilippus

Queen: Upperside: chestnut brown with scattered white spots and black borders with white spots. Underside: hindwing has black veins. Host plants: Milkweeds, including climbing milkweed. Uncommon at the BFS.



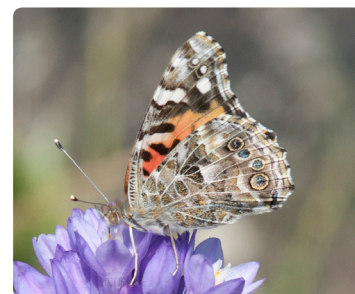
4

Painted Lady
Vanessa cardui



5

Painted Lady
Vanessa cardui



6

Painted Lady
Vanessa cardui

Painted Lady: Upperside: orange-brown with darker wing bases; forewing with black apex patch and white bar on leading edge. Hindwing with row of 5 small black spots, sometimes with blue scales. Underside: complex pattern of gray, brown, black, and orange with 4 small submarginal eyespots. Host plants: Thistles and many others. Very common at the BFS.



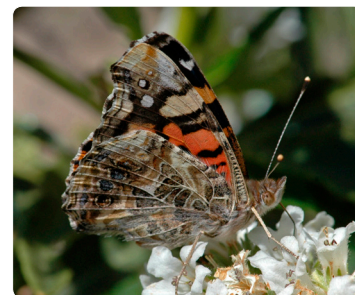
7

West Coast Lady
Vanessa annabella



8

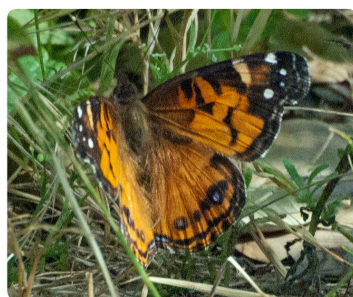
West Coast Lady
Vanessa annabella



9

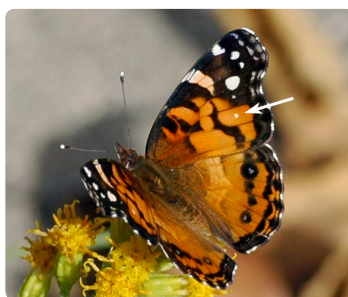
West Coast Lady
Vanessa annabella

West Coast Lady: Upperside: orange-brown with darker wing bases; forewing with black apex patch and orange bar on leading edge. Hindwing with 3 or 4 blue submarginal spots. Underside: complex pattern of gray, brown, black, and orange with indistinct eyespots. Host plants: Many plants in the mallow family.



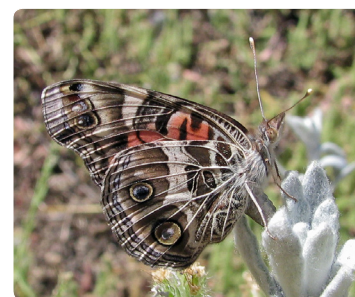
10

American Lady
Vanessa virginiensis



11

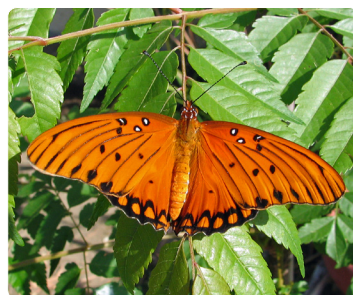
American Lady
Vanessa virginiensis



12

American Lady
Vanessa virginiensis

American Lady: Upperside: orange-brown with darker wing bases; forewing with black apex patch and white or pale orange bar on leading edge. Usually with tiny white spot in orange area. Hindwing with 5 small black spots with some blue scale. Underside complex pattern of gray, brown, black, and orange with 2 large eyespots. Host plants: Plants in the sunflower family, including cudweed. Uncommon at the BFS.



13

Agraulis vanillae
Gulf Fritillary



14

Agraulis vanillae
Gulf Fritillary



15

Fiery Skipper
Genus species

Gulf Fritillary: Upperside: bright orange with black markings around the border and three black-rimmed white spots on each forewing. Underside: brown with longated silvery spots. Host plants: Passion Flower. Uncommon at the BFS.

Fiery Skipper: Small compared to other orange butterflies. Upperside: orange and brown. Underside: orange or tan with brown spots. Host plant: grasses. Common at the BFS.

Butterflies of the Bernard Field Station

Robert J. Bernard Biological Field Station, Claremont, CA

2

Produced by: Nancy Hamlett

Photos by: Nancy Hamlett, Jonathan Wright, Tad Beckman, and Hartmut Wisch unless otherwise noted

© 2015 Bernard Field Station, Claremont, CA 91711 USA

bfs.claremont.edu

© 2015 The Field Museum, Chicago, IL 60605 USA

idtools.fieldmuseum.org/

CRCG@fieldmuseum.org

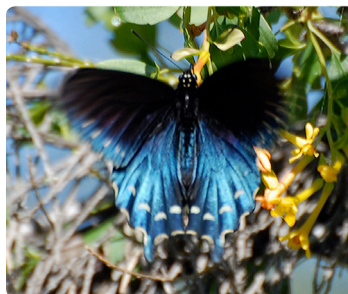
version 01

02/2015

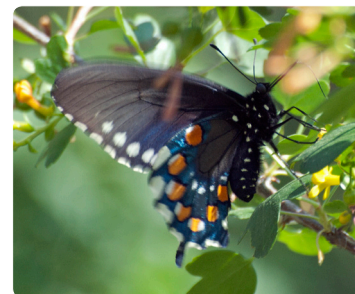
Pipevine Swallowtail: Large, tailed butterfly. Upperside: Black with blue iridescence; white spots near margin. Underside: Iridescent blue with seven round orange spots. Flutters wings incessantly while nectaring. Host plant: pipevine.



16 Pipevine Swallowtail
Battus philenor



17 Pipevine Swallowtail
Battus philenor

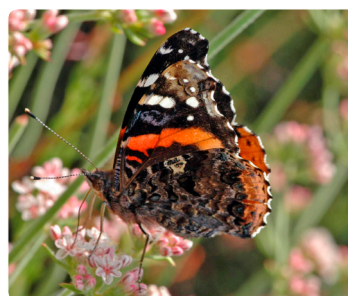


18 Pipevine Swallowtail
Battus philenor

Red Admiral: Upperside: black with white spots near forewing tips; red median band on forewing and red marginal band on hindwing. Underside: Mostly mottled grey/brown with leading edge of forewing marked with red, white and blue. Host plants: nettles.



19 Red Admiral
Vanessa atalanta



20 Red Admiral
Vanessa atalanta



21 Mourning Cloak
Genus species

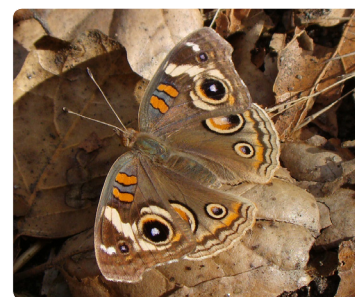
Western Giant Swallowtail: Upperside: black or brown with wide yellow band and border. Underside: yellow with black markings and some red and blue spots on hind wing. Host plants: citrus family.



22 Western Giant Swallowtail
Papilio rumiko



23 Western Giant Swallowtail
Papilio rumiko

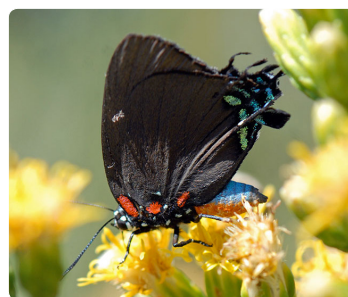


24 Common Buckeye
Junonia coenia

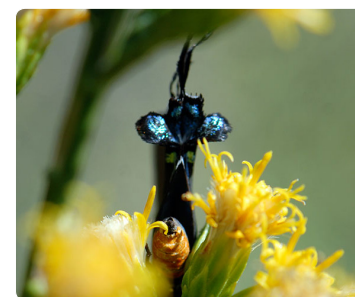
Common Buckeye: Upperside: brown with 2 orange bars and 2 eyespots on forewing and two on hindwing. Underside: brown with or without obvious eyespots. Host plants: snapdragon family.



25 Common Buckeye
Junonia coenia



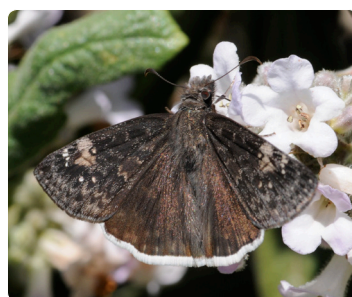
26 Great Purple Hairstreak
Atlides halesus



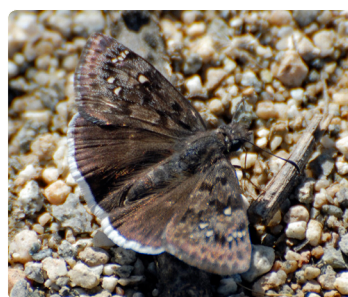
27 Great Purple Hairstreak
Atlides halesus

Great Purple Hairstreak: Upperside: black with iridescent blue. Underside: brown with red spots near base and three rows of greenish spots near tip; iridescent blue patch on male only. Body blue and orange. Wiggles tails. Host plant: mistletoe. Uncommon at the BFS.

Funereal and Mournful Duskywings: Dark brown or black mottled with hyaline spots and white fringe on hindwing. **Funereal:** Blacker color, narrower forewings with a light brown patch, and larger, more triangular hindwings. Host plants: Deerweed, other legumes. **Mournful:** Browner color. Underside of hindwing with row of long white spots above the fringe. Host plants: oaks. Both species common at the BFS.



28 Funereal Duskywing
Erynnis funeralis



29 Mournful Duskywing
Erynnis tristis



30 Mournful Duskywing
Erynnis tristis

Butterflies of the Bernard Field Station

Robert J. Bernard Biological Field Station, Claremont, CA

3

Produced by: Nancy Hamlett

Photos by: Nancy Hamlett, Jonathan Wright, Tad Beckman, and Hartmut Wisch unless otherwise noted

© 2015 Bernard Field Station, Claremont, CA 91711 USA

bfs.claremont.edu

© 2015 The Field Museum, Chicago, IL 60605 USA

idtools.fieldmuseum.org/

CRCG@fieldmuseum.org

version 01

02/2015

Brown Elfin: No tails. Upperside: male gray-brown, female reddish brown. Underside: chestnut brown with dark irregular median line. Host plant: Many, incl. dodder.

Brown Hairstreaks: Brown butterflies with one tail and indistinct irregular dark bands and blue spot.

Gold-Hunter's: dull orange spot on underside of hindwing. Host plants: oaks. **Hedgerow:** Black dot on upperside of forewing. Host plants: ceanothus.



31 Brown Elfin
Callophrys augustinus



32 Gold-hunter's Hairstreak
Satyrium auretorum



33 Hedgerow Hairstreak
Satyrium saepium

Sleepy Orange: Upperside: orange, small black dot on forewing. Underside orange-yellow in summer; brick-red, brown or tan in winter. Host plant: *Cassia* sp.



34 Sleepy Orange, summer
Abaeis nicippe



35 Sleepy Orange, winter
Abaeis nicippe



35 Harford's Sulphur
Colias harfordii

Harford's Sulphur: Upperside: rich yellow with wide dark border on forewing, narrow on hindwing and dark spot on forewing. Underside: Silver spot usually without satellite spot. Host plant: deerweed.



37 Harford's Sulphur
Colias harfordii



38 Orange Sulphur
Colias eurytheme



39 Orange Sulphur, alba form
Colias eurytheme

Cloudless Sulphur: Upperside: male yellow with no markings; female yellow or white with irregular black borders on both wings and dark spots in forewing. Underside: 2 pink-edged silver spots on hindwing. Host plants: *Cassia* sp.



40 Orange Sulphur
Colias eurytheme



41 Cloudless Sulphur
Phoebis sennae



42 Cloudless Sulphur, male
Phoebis sennae

Western Tiger Swallowtail: Large, tailed butterfly. Both upperside and underside yellow with black stripes. Host plants: cottonwood, aspen, willow, wild cherry, and ash.



43 Cloudless Sulphur, female
Phoebis sennae



44 Western Tiger Swallowtail
Papilio rutulus



45 Pale Swallowtail
Papilio eurymedon

Pale Swallowtail: Upperside: creamy white with heavy black stripes. Front wing narrow and pointed. Host plants: rose family, including cherry, coffeeberry, and ash.

Butterflies of the Bernard Field Station

Robert J. Bernard Biological Field Station, Claremont, CA

4

Produced by: Nancy Hamlett

Photos by: Nancy Hamlett, Jonathan Wright, Tad Beckman, and Hartmut Wisch unless otherwise noted

© 2015 Bernard Field Station, Claremont, CA 91711 USA

bfs.claremont.edu

© 2015 The Field Museum, Chicago, IL 60605 USA

idtools.fieldmuseum.org/

CRCG@fieldmuseum.org

version 01

02/2015

Cabbage White: Upside: white or pale yellowish-white with black tip on forewing; forewing with 2 black spots female; 1 in male. Underside: forewing white with yellowish tip and 2 black spots; hindwing uniformly pale yellow. Host plants: Mustard family. Common at the BFS.



46 *Pieris rapae*
Cabbage White



47 *Pieris rapae*
Cabbage White

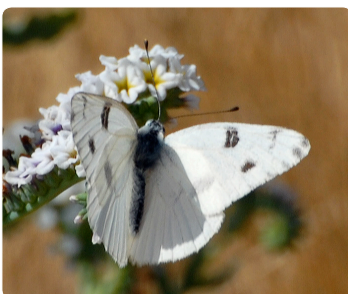


48 *Pieris rapae*
Cabbage White

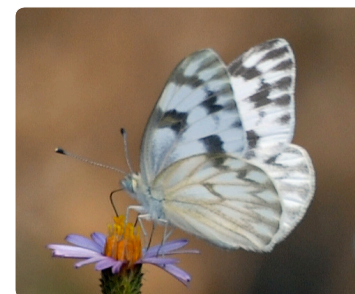
Checkered White: Upside: males nearly all white, with dark spots and dashes on outer side of forewing; females more heavily patterned with brown markings. Underside: Male as upperside; female hindwing and tip of forewing with yellow-tan (sometimes greenish) markings. Host plants: Mustard and caper families. Common at the BFS.



49 Checkered White, male
Pontia protodice



50 Checkered White, male
Pontia protodice



51 Checkered White, female
Pontia protodice

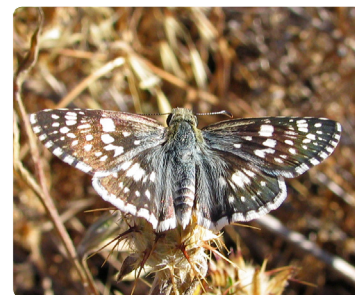
Northern White Skipper: Upside: male white with narrow black chevrons at the outer margins; female with thicker, darker markings and black at the wing bases. Underside: white with pale tan markings. Host plants: Various mallows.



52 Checkered White, female
Pontia protodice



53 Northern White Skipper
Heliopetes ericetorum



54 White Checkered Skipper
Pyrgus albescens

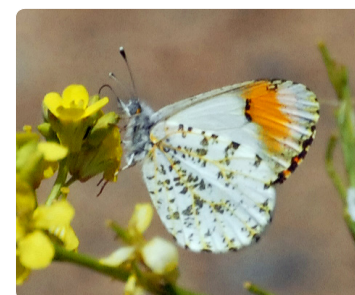
White Checkered Skipper: Upside: white square spots on brown; checkered fringes; body of male blue-gray, female black. Underside: dull white with dark gray bands. Host plants: Mallows.



55 Sara Orangetip, male
Anthocharis sara



56 Sara Orangetip, male
Anthocharis sara



57 Sara Orangetip, female
Anthocharis sara

Sara Orangetip: Upside: male forewing with large, orange-red spot; border of apex dark, narrow. Female spot smaller; dark border with white wedges. Underside: hindwing with scattered, dark-green or yellow-green marbling. Host plants: Mustard family.

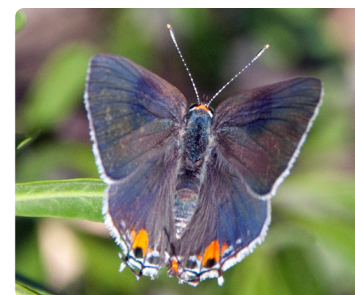
Western Green Hairstreak: Upside: gray to orange-brown. Underside: green with a brown patch, sometimes a few white spots. Host plants: Buckwheats and deerweed.



58 Western Green Hairstreak
Callophrys affinis



59 Gray Hairstreak
Strymon melinus



60 Gray Hairstreak
Strymon melinus

Gray Hairstreak: 1 long, 1 stubby tail on hindwing. Upside: blue-gray with large red spot near tail. Underside: pale to dark gray with relatively straight white postmedian line, bordered with orange on the inside edge. Host plants: Many.

Butterflies of the Bernard Field Station

Robert J. Bernard Biological Field Station, Claremont, CA

5

Produced by: Nancy Hamlett

Photos by: Nancy Hamlett, Jonathan Wright, Tad Beckman, and Hartmut Wisch unless otherwise noted

© 2015 Bernard Field Station, Claremont, CA 91711 USA

© 2015 The Field Museum, Chicago, IL 60605 USA

bfs.claremont.edu

idtools.fieldmuseum.org/

CRCG@fieldmuseum.org

version 01

02/2015

Acmon Blue: Upperside: male blue, female brown, both with orange border with dark spots on hindwing. Underside: White with black spots, row of orange submarginal spots with blue scales on hindwing. Host plants: buckwheats, lupines, and lotus. Common at the BFS.



61 Acmon Blue
Plebejus acmon



62 Acmon Blue
Plebejus acmon



63 Acmon Blue
Plebejus acmon

Bernardino Blue: Upperside: male blue with narrow black outer margin, no orange band. Female brown with orange submarginal band on hindwing. Underside: off-white with distinct black spots and an orange band on hindwing. Checkered fringe. Host plants: buckwheat. Common at the BFS.



64 Bernardino Blue
Euphilotes bernardino



65 Bernardino Blue
Euphilotes bernardino



66 Bernardino Blue
Euphilotes bernardino

Marine Blue: Upperside: blue; male with purple tinge, female with no white. Underside: pale brown and white bands from costa to inner margin, 2 prominent eyespots on hindwing. Host plants: Plumbago and many legumes.



67 Marine Blue
Leptotes marina



68 Marine Blue
Leptotes marina

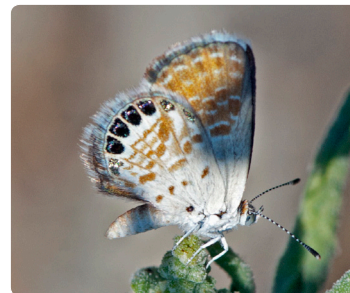


69 Common Name
Genus species

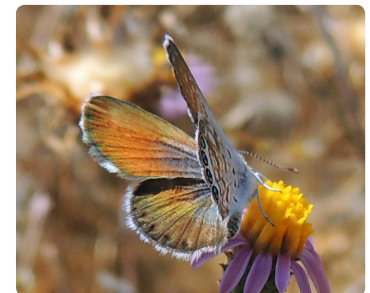
Western Pygmy-Blue: Tiny. Upperside: copper brown with dull blue at the bases of both wings. Underside: hindwing copper brown with white markings and white at the base; fringe mostly white, 3 or 4 small black spots near base, row of black spots at outer margin. Host plants: Pigweed, saltbush, chenopodium.



70 Western Pygmy-Blue
Brephidium exilis



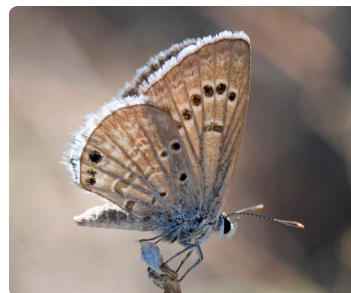
71 Western Pygmy-Blue
Brephidium exilis



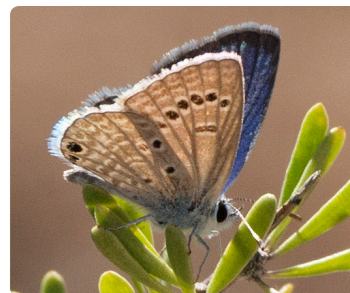
72 Western Pygmy-Blue
Brephidium exilis

Reakirt's Blue: Upperside: male light blue with darker veins and dusky border, female darker. Underside: forewing with postmedian row of 5 round black spots circled with white.

Ceraunus Blue: Upperside: male light blue with darker narrow border, female dark brown, often with wing bases blue. Underside: gray with a row of dark postmedian dashes and prominent eyespot. Host plants: Woody legumes.



73 Reakirt's Blue
Echinargus isola



74 Reakirt's Blue
Echinargus isola



75 Ceraunus Blue
Hemiargus ceraunus